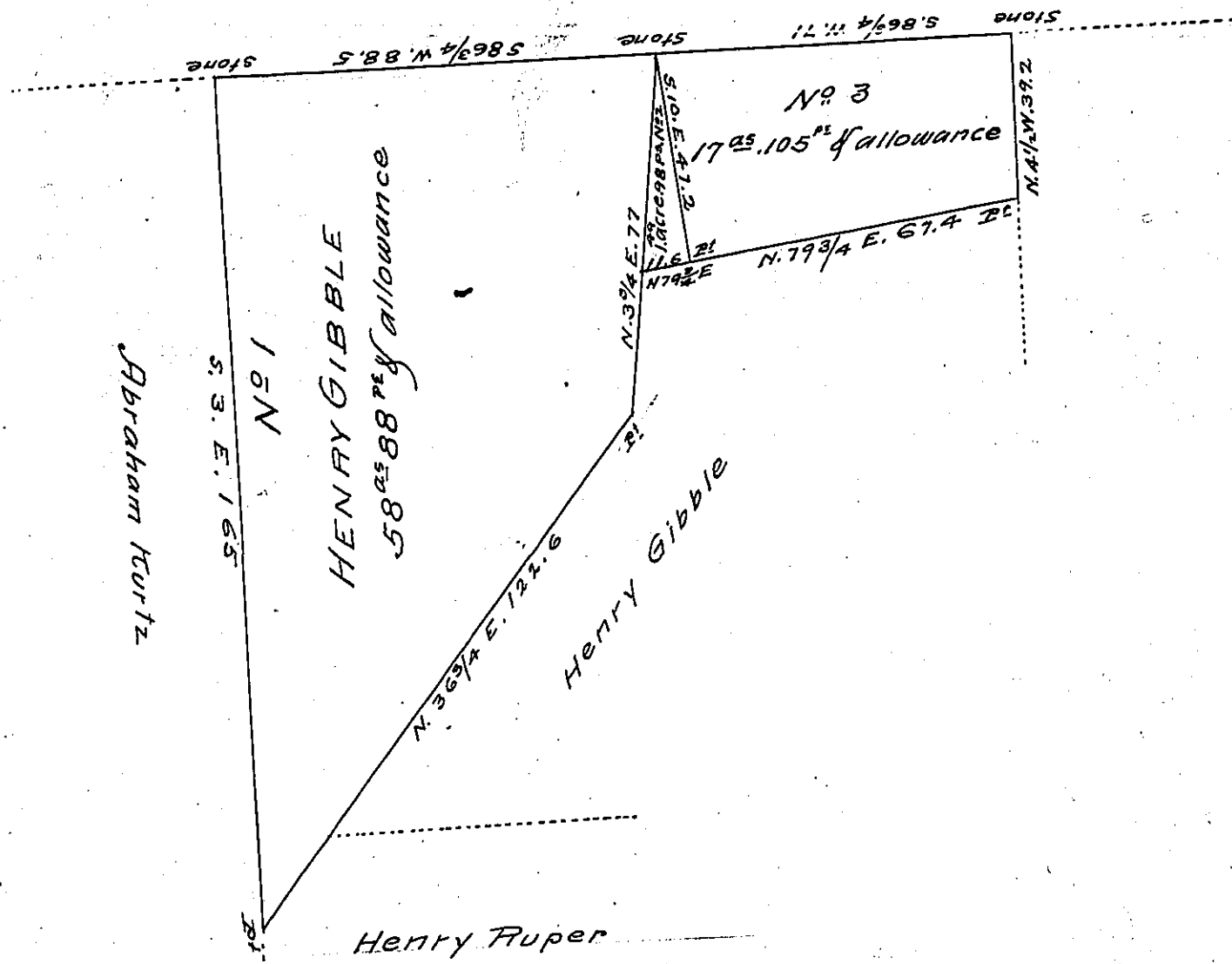


Heirs of George Widdler dec'd



Draught of three tracts of land situate in Dickinson Township
 Cumberland County. No. 1. Containing 58^{as} 88^{ps} & allowance.
 Being part of a larger tract of land of 187^{as} 67^{ps} & allowance.
 which was surveyed August 31st 1785 in pursuance of a Warrant
 granted to John Peagh dated February 22^d 1785. No. 2. Containing 1
 acre 98^{ps} & allowance &c. Being part of a larger tract of 611^{as} 39^{ps}
 & allowance which ^{was} surveyed July 30th 1790 in pursuance of a War-
 rant granted to John Rigby & Co. dated May 31st 1762. No. 3. Containing
 17^{as} 105^{ps} & allowance. Being part of a larger tract of 752 acres & allow-
 ance which was surveyed July 29th 1790 in pursuance of a warrant
 granted to John Rigby & Co. dated May 31st 1762.

To John Rowe Esq.
 Surveyor General.

Abm. Lamberton
 County Surveyor

IN TESTIMONY that the above is a copy of the original remaining on file in
 the Department of Internal Affairs of Pennsylvania, made
 conformably to an Act of Assembly approved the 16th day of
 February, 1833, I have hereunto set my Hand and caused
 the Seal of said Department to be affixed at Harrisburg,
 this ninth day of October 1906

Laurel B. Perry
 Secretary of Internal Affairs.